

ALTERATIONS

NO	DESCRIPTION	AUTHORITY	BY	DATE	APP'D
----	-------------	-----------	----	------	-------

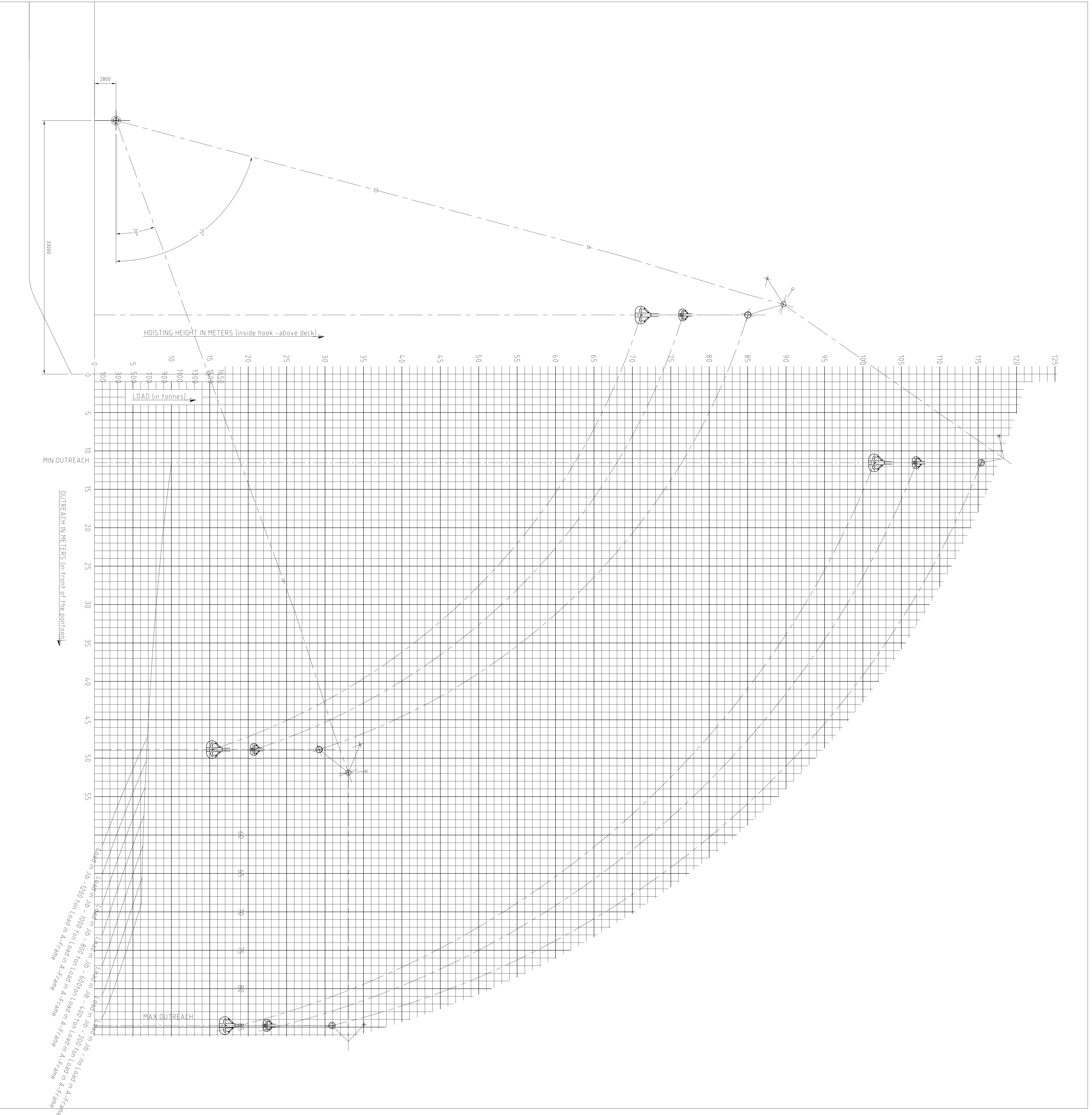
REFERENCE PLANS					
NO	TITLE	DB	FELS	PLAN NO	PLAN BY

GENERAL NOTES					
---------------	--	--	--	--	--

PRINT RECORD					
NO. PRINTED		DATE PRINTED			
ALTERATION		OWNER			
SECTOR		SECTOR MANAGER DEPT.			
PROJECT MANAGER		PROJECT ENGINEER			
PRODUCTION DEPT.		PWD DEPT.			
QA DEPT.		PURCHASING DEPT.			
ENGINEERING DEPT.					

ASIAN LIFT PTE. LTD.					
DATE:	5-2-1997	SCALE:	1:200		
DESIGNED BY:	DNB/DBR	HLL/JOB No.:	B 235		
DRAWN:	db/gw	ENGR. PROJECT No.:			
CHECKED:		DESIGN APPROVED:			

JOB: 5200T SHEERLEG CRANE VESSEL					
TITLE: HOISTING DIAGRAM					
SHEET 1 OF 1 SHEETS					
FELS PLAN NO.					
DRAWING NO.:					
KLT No. 0					



NOTE  
 OUTREACH AND HOISTING HEIGHT ARE MEASURED WITH THE POINT ON A T EVEN KEEL  
 TWO (2) TACKLES RIGGED IN A-FRAME AND TWO (2) TACKLES IN JIB

revision	date	description
B	03-03-2000	db/gw

approved	date	revision	description
<b>dbp</b> bureau voor scheeps- en werk- tuigbouw Ir. w. den boer b.v. doordrecht (holland)			
project	3200 T SHEERLEG CRANE VESSEL ASIAN HERCULES II	company	by Bureau den Boer
part	37 - CALCULATIONS - HOISTING DIAGRAMS		
date	5-2-1997	drawn	db/gw
ident. to ship no.	2116-37-52	checked	scale 1:200
timeuse	353A.DWG	revision	