

ALTERATIONS

NO DESCRIPTION AUTHORITY BY DATE APP'D

NO	DESCRIPTION	AUTHORITY	BY	DATE	APP'D
REFERENCE PLANS					
NO	TITLE	DB	FELS	PLAN NO.	PLAN BY

GENERAL NOTES

PRINT RECORD

NO. PRINTED	
DATE PRINTED	
ALTERATION	
OWNER	
SECTOR	
SECTOR MANAGE. DEPT.	
PROJECT MANAGER	
PROJECT ENGINEER	
PRODUCTION DEPT.	
P&ID DEPT.	
O.A. DEPT.	
PURCHASING DEPT.	
ENGINEERING DEPT.	

APPROVED BY: American Bureau of Shipping

DATE: 03-03-2000

DESIGNED BY: DEN BOER

SCALE: 1:200

ENGR. PROJECT NO.: B 235

DATE: 3-2-1997

SCALE: 1:200

DESIGNED BY: DEN BOER

ENGR. PROJECT NO.: B 235

CHECKED BY: DEN BOER

DESIGN APPROVED BY:

ASIAN LIFT PTE. LTD.

31 Shipyard Road, Jurong Town, Singapore 2662.

FELS

JOB: 5200T SHEERLEG CRANE VESSEL

TITLE: HOISTING DIAGRAM

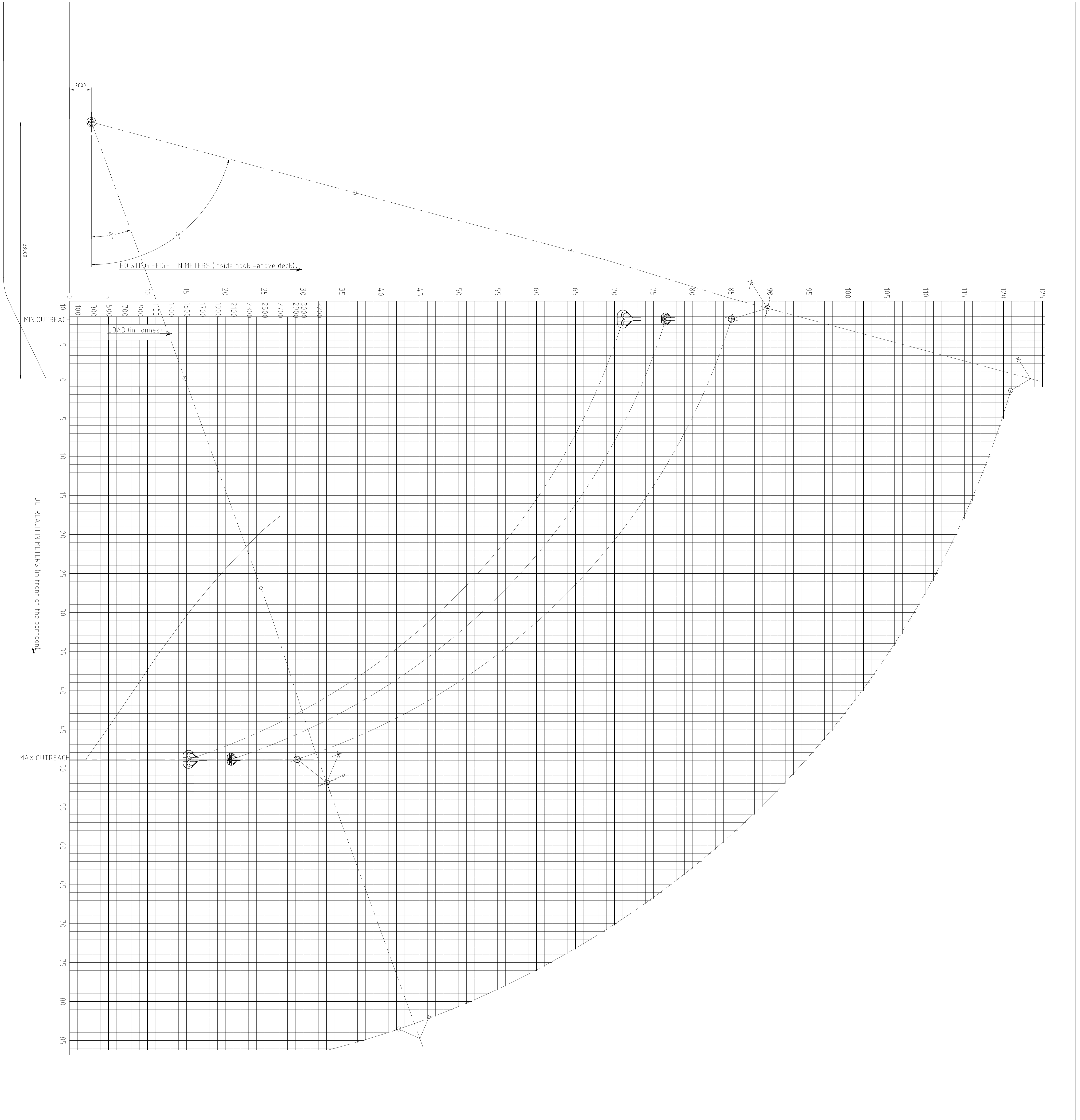
SHEET 1 OF 1 SHEETS

FELS PLAN NO.

DRAWING NO.: 2116-37-50

SCALE: A0

DATE: 0



NOTE

OUTREACH AND HOISTING HEIGHT ARE MEASURED WITH THE POINT ON A T-EVEN KEEL

FOUR (4) TACKLES RIGGED IN A-FRAME AND NO TACKLES IN JIB

revision	date	description
B	03-03-2000	db/gw

approved: **db/gw**

revision: **db/gw**

name: **ABS APPROVAL**

revision subject: **bureau voor scheeps- en werk- tuigbouw Ir. w. den boer b.v.**

approved by: **den boer**

project: **5200 T SHEERLEG CRANE VESSEL ASIAN HERCULES II**

part: **37 - CALCULATIONS - HOISTING DIAGRAMS**

LOAD IN A-FRAME WITH JIB 1600 T (10° DEGR)

date: 3-2-1997

drawn: **db/gw**

checked: **db/gw**

scale: 1:200

ident. to draw no.: **2116-37-50**

revision: **B**