



SMIT TYPHOON

400 MT PROPULSION-
ASSISTED SHEERLEG
CRANE

General

Class

Principal dimensions

Length o.a. 46.55 m
 Breadth 20 m
 Depth 3.60 m
 Draught max. 3.10 m
 Gross Tonnage 912 RT
 Nett Tonnage 568 RT
 Sailing height sea 16 m
 Sailing height inland 6.9 m

Navigation aids

Echo sounder ELAC, GPS RS 57000
 Shipmate, mobile phone / fax, SSB / VHF /
 portable VHF

Propulsion

2 x 200 kW

Bow thruster

1 x 88 kW

Generators

Main generator no. 1 & 2: 380-400V / 202A /
 140KVA / 50Hz / 150
 Gen. No. 3: 380-400V / 68A / 40 KVA/ 32 kW
 / 50 Hz
 Gen. No. 4: 380-400V / 44-48 kW / 55-60-
 5KVA / 79-4-87-3

Mooring winches

Aft 2 x 10/5T, 28 mm \varnothing , 250 m
 Forward 2 x 10/5T, 28 mm \varnothing , 300 m

Anchor winches

Aft 2 x 5T, 38 mm \varnothing , 189 m

Lifting capacities

Main sheerleg 2 x 200 T (Optional single
 block lift up to 300 T)
 20 m flyjib 2 x 110 T (Optional single
 block up to 220T)
 37 m flyjib 2 x 50 T
 9 m flyjib 2 x 50 T

Maximum outreach

Main sheerleg 20 m
 20 m flyjib 40 m
 37 m flyjib 63 m
 9 m flyjib 68 m

Max hook heights (above deck level):

Main sheerleg 28 m
 20 m flyjib 48 m
 37 m flyjib 63 m
 9 m flyjib 68 m

Equipment

LP compressor 10 psi / 40 hp
 Welding machine 600 amps
 Lathe machine

Boat

1 x 6.5 m steel work boat

Fresh water

145 T

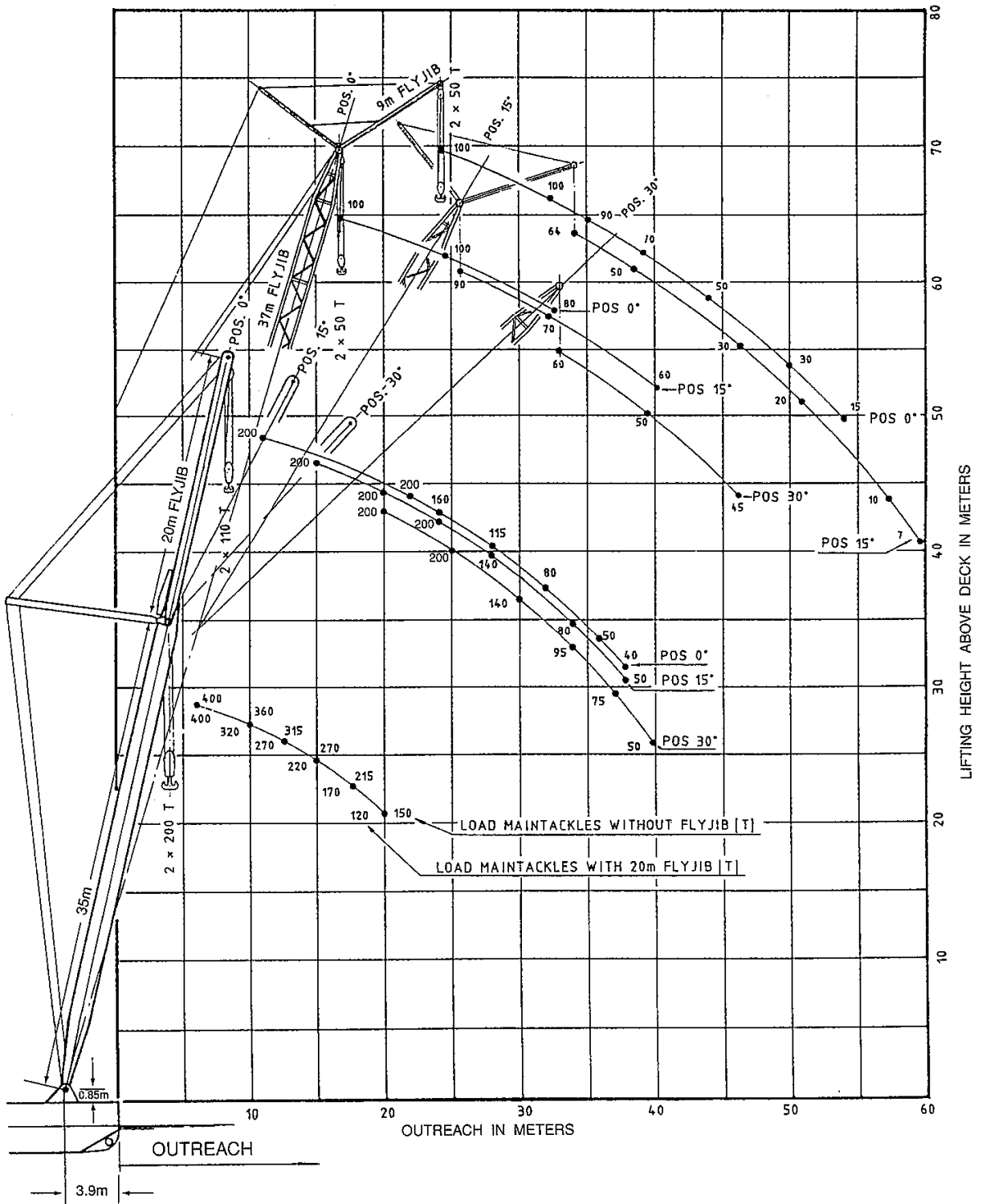
Fuel

0.5 T (own consumption)
 145 T storage

Accommodation

12 persons

LOAD CHART



For Enquiries, please contact

Asian Lift Pte Ltd
 23 Gul Road , Singapore 629356
 Tel: 6668 4222, Fax: 6668 4333
 E-mail: asianlift@asianlift.com.sg
 Website: www.asianlift.com.sg

