



For Enquiries, please contact

Asian Lift Pte Ltd
 23 Gul Road, Singapore 629356
 Tel: +65 6668 4222, Fax: +65 6668 4333
 E-mail: asianlift@asianlift.com.sg
 Website: www.asianlift.com.sg



ASIAN HERCULES III



ASIAN HERCULES III
 5000 MT SEAGOING FLOATING
 SHEERLEG CRANE

Name Asian Hercules III
Flag Singapore
Port of Registration Singapore
Callsign 9V2514
Built Keppel Nantong
Class ABS A1, + AMS E - Heavy Lift Vessel

Principal dimensions
 Length 106.42 m
 Breadth (moulded) 52.00 m
 Depth (moulded) 10.00 m
 Displacement 26,456 T (even keel @ 5.50 m)
 Gross Tonnage 16805 T
 Nett Tonnage 5041 T
 Speed 7 knots (4 x each about 2000 kW)
 Deck loading 20 mt/m²
 Fuel bunker capacity 2,021 m³
 Fresh water capacity 474 m³
 Ballast water capacity 14438 m³

A-frame working position
 For creating more deck space for cargo on the main deck, the A-frame of the sheerleg can be skidded along fixed tracks into three working positions and one position for sea transport:
 Position 1: Located at 7200 mm from aft end of vessel
 Position 2: Located at 19200 mm from aft end of vessel
 Position 3: Located at 36000 mm from aft end of vessel
 Position 4 (sea transport): Located at 81600 mm from aft end of vessel

Generators
 Main generator 4 units diesel engine driven generators of output capacity 4364 kW
 Emergency / Auxiliary generator 1 unit diesel engine driven generator of output capacity 750 kW

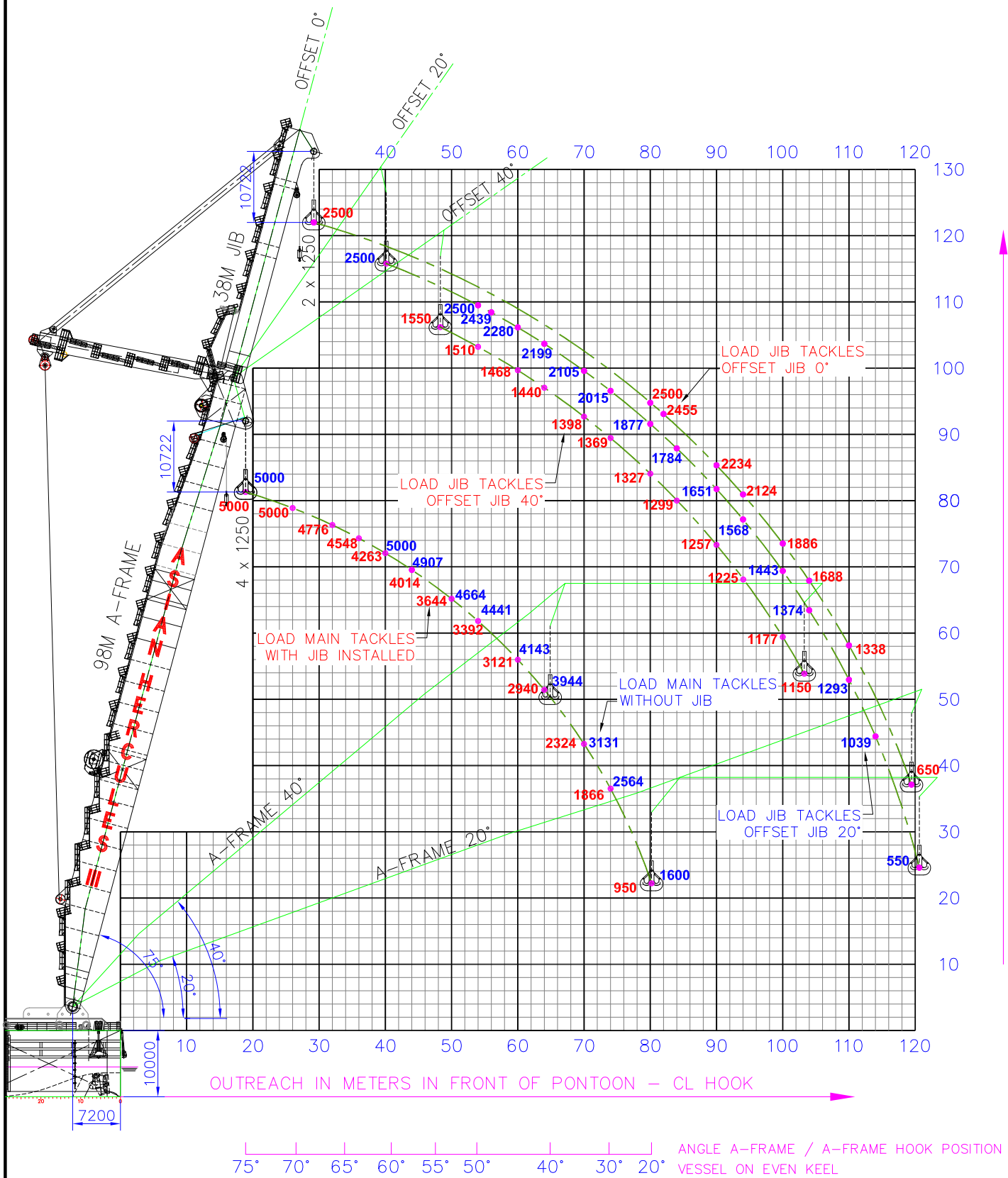
Mooring winches 8 point mooring 60T cap. 1200 m of 46 mm dia. wire rope

Winches
 Luffing: 2 units luffing winches providing maximum luffing speed of 1.00m/min at full load
 Main hoist: 4 units main hoisting winches for A-frame and 2 units for Jib, each capable of hoisting speeds 2m/min at full load of 1250MT and 5m/min at light/no load
 Jib adjustment: 2 units jib adjustment winches, mounted on the A-frame, for adjustment of the Jib without load from 0° to 40° in respect to the A-frame.
 20 MT aux. hoist: 2 units aux. hoisting winches for A-frame and 1 unit for Jib each capable of hoisting speeds of 10m/min at full load of 20 MT
 Cargo handling: 2 units cargo winches capable of pulling 20 MT at 10m/min
 Class anchor 2 unit class anchor winch for handling the 6975 kg HHP bow anchor via 76 mm grade 3 anchor chain

Accommodation 45 persons

NOTES:

- 1) ALL LOADS ARE IN METRIC TONNES AND FOR INLAND WATER.
- 2) ALL LOAD CAPACITIES ARE WITHOUT TRAVERSES.
- 3) FOLLOWING LOAD CAPACITIES ARE ON REQUEST:
 - A-FRAME IN POSITION III
 - COMBINED LIFTING WITH BOTH MAIN AND JIB TACKLES
 - OFFSHORE

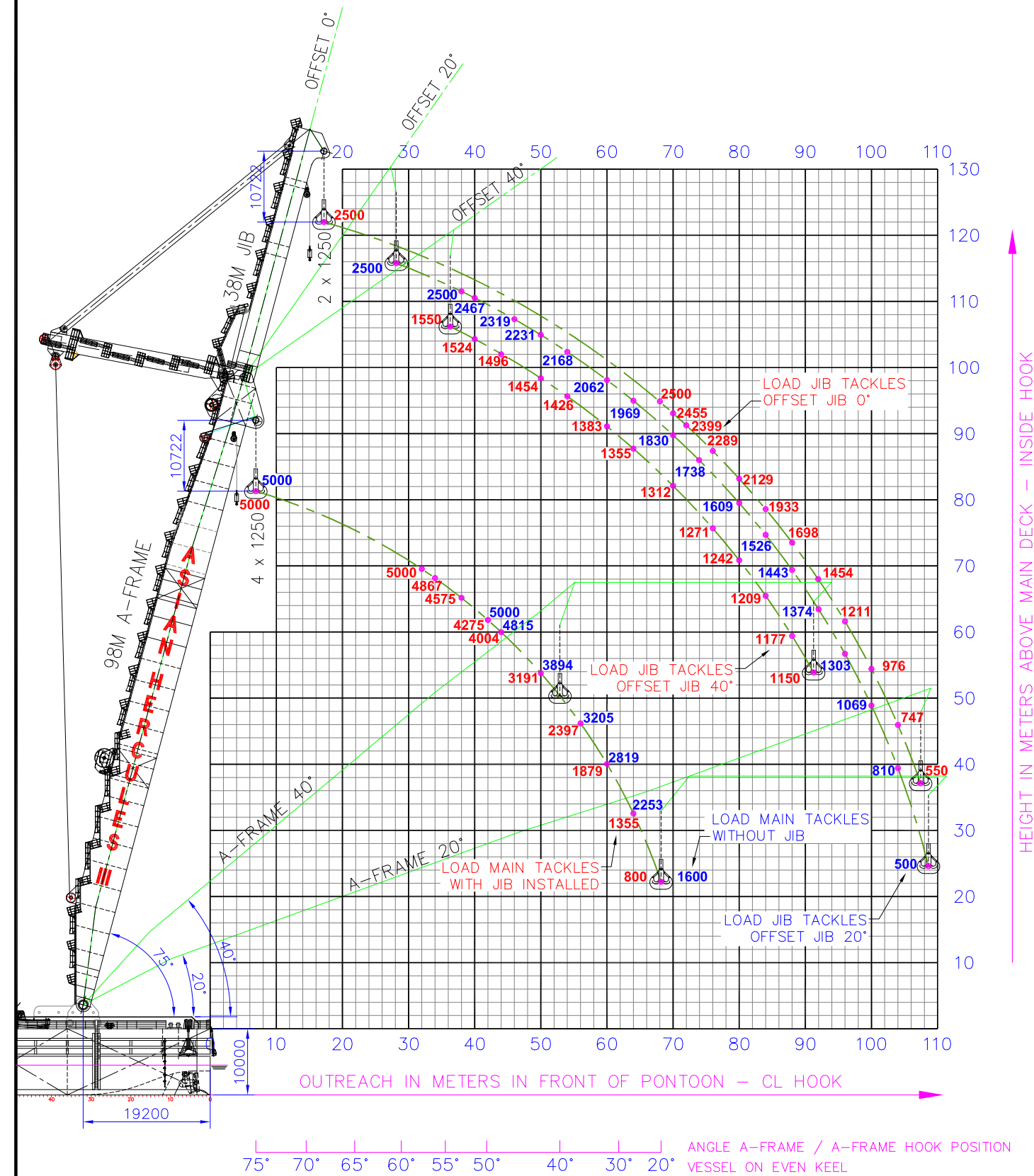


GUIDELINE FOR CAPACITY DIAGRAM "ASIAN HERCULES III"

A-FRAME IN POSITION I

NOTES:

- 1) ALL LOADS ARE IN METRIC TONNES AND FOR INLAND WATER.
- 2) ALL LOAD CAPACITIES ARE WITHOUT TRAVERSES.
- 3) FOLLOWING LOAD CAPACITIES ARE ON REQUEST:
 - A-FRAME IN POSITION III
 - COMBINED LIFTING WITH BOTH MAIN AND JIB TACKLES
 - OFFSHORE



GUIDELINE FOR CAPACITY DIAGRAM "ASIAN HERCULES III"

A-FRAME IN POSITION II