



## ASIAN HERCULES II

3200 MT SEAGOING FLOATING  
SHEERLEG CRANE

<b>Name</b>	<b>Asian Hercules II</b>
<b>Flag</b>	<b>Singapore</b>
<b>Port of Registration</b>	<b>Singapore</b>
<b>Callsign</b>	<b>9V5356</b>
<b>Built</b>	<b>1996</b>
<b>Class</b>	<b>ABS A1 (E) Barge + PAS</b>

### Principal dimensions

Length	91.00 m
Breadth (moulded)	43.00 m
Depth (moulded)	8.50 m
Displacement	16,500 T (even keel)
Gross Tonnage	10,560 T
Nett Tonnage	3,168 T
Speed	7 knots
Deck loading	15 mt/m <sup>2</sup>
Fuel bunker capacity	445 m <sup>3</sup>
Fresh water capacity	210 m <sup>3</sup>
Ballast water capacity	12,600 m <sup>3</sup>

### A-frame working position

For creating more deck space for cargo on the main deck, the A-frame of the sheerleg can be skidded along fixed tracks into three working positions:

Position 1:	Located at 5200 mm from forward of vessel
Position 2:	Located at 33000 mm from forward of vessel
Position 3:	Located at 59000 mm from forward of vessel

### Generators

Main generator	3 units diesel engine driven generators of output capacity 1940 kW @0.7 pf
Auxiliary generator	1 unit diesel engine driven generator of output capacity 600 kW @0.7 pf
Emergency generator	1 unit diesel engine driven generator of output capacity 200 kW @0.8 pf

### Mooring winches

8 point mooring 30T cap. 1000 m of 44 mm diam. wire rope

### Winches

Luffing:	2 units luffing winches providing maximum luffing speed of 0.833m/min at full load
Main hoist:	4 units main hoisting winches each capable of hoisting speeds 2m/min at full load of 800MT and 4m/min at light/no load
60 MT aux. hoist:	2 units aux. hoisting winches each capable of hoisting speeds of 5m/min at full load of 38 MT and 10 m/min at light/no load
Cargo handling:	4 units cargo winches capable of pulling 20 MT at 10m/min
Anchor mooring class anchor	1 unit class anchor winch for handling the 5515 kg AC14 bow anchor via 66 mm grade 3 anchor chain

### Accommodation

34 persons

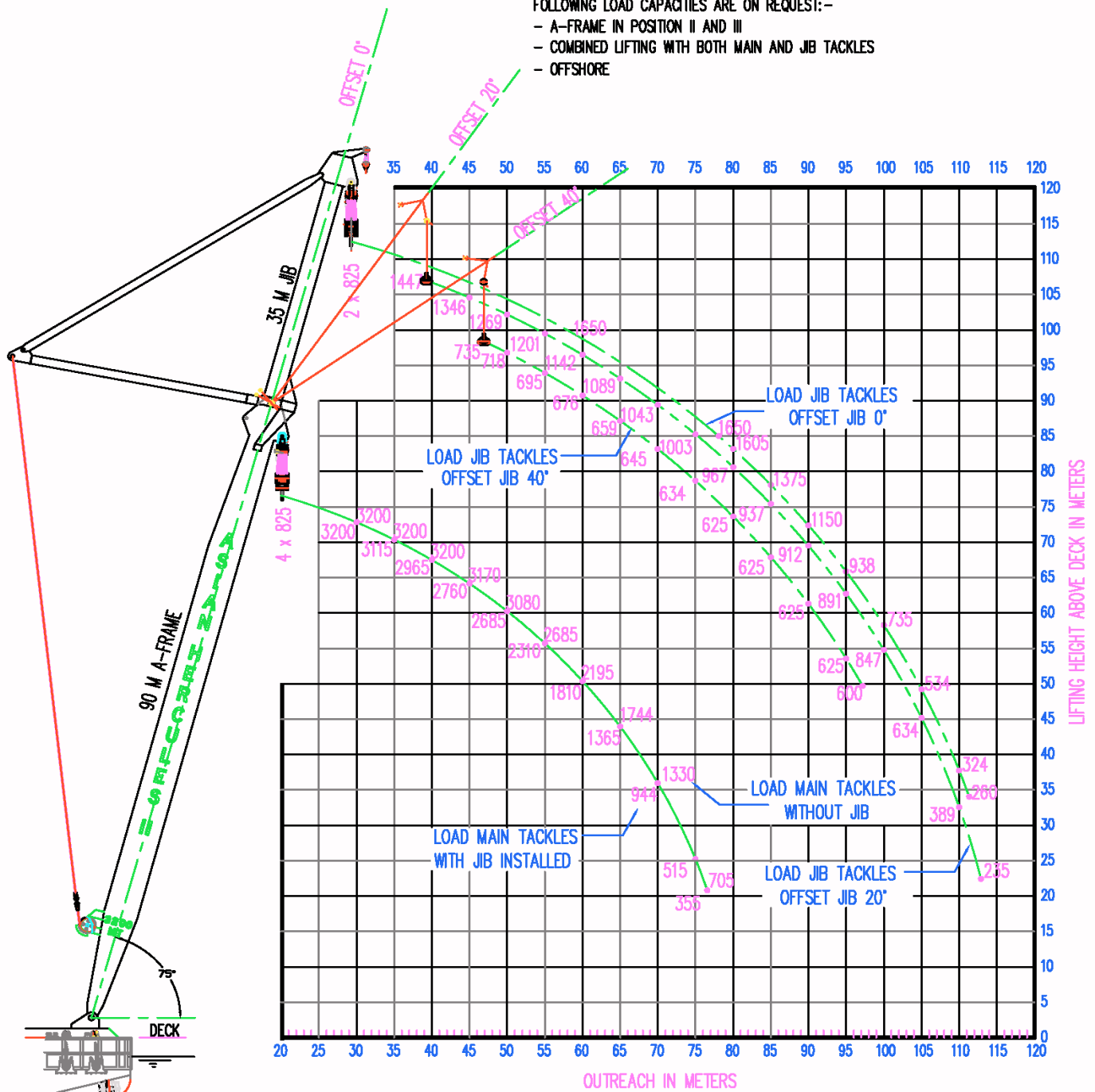
**NOTE :**

ALL LOADS IN METRIC TONNES AND FOR INLAND WATER.

ALL LOAD CAPACITIES ARE WITHOUT TRAVERSES.

FOLLOWING LOAD CAPACITIES ARE ON REQUEST:-

- A-FRAME IN POSITION II AND III
- COMBINED LIFTING WITH BOTH MAIN AND JIB TACKLES
- OFFSHORE



**GUIDELINE FOR CAPACITY DIAGRAM 'ASIAN HERCULES II' - 35 M JIB**







For Enquiries, please contact

Asian Lift Pte Ltd  
 23 Gul Road , Singapore 629356  
 Tel: 6668 4222, Fax: 6668 4333  
 E-mail: [asianlift@asianlift.com.sg](mailto:asianlift@asianlift.com.sg)  
 Website: [www.asianlift.com.sg](http://www.asianlift.com.sg)

**Keppel FELS**

